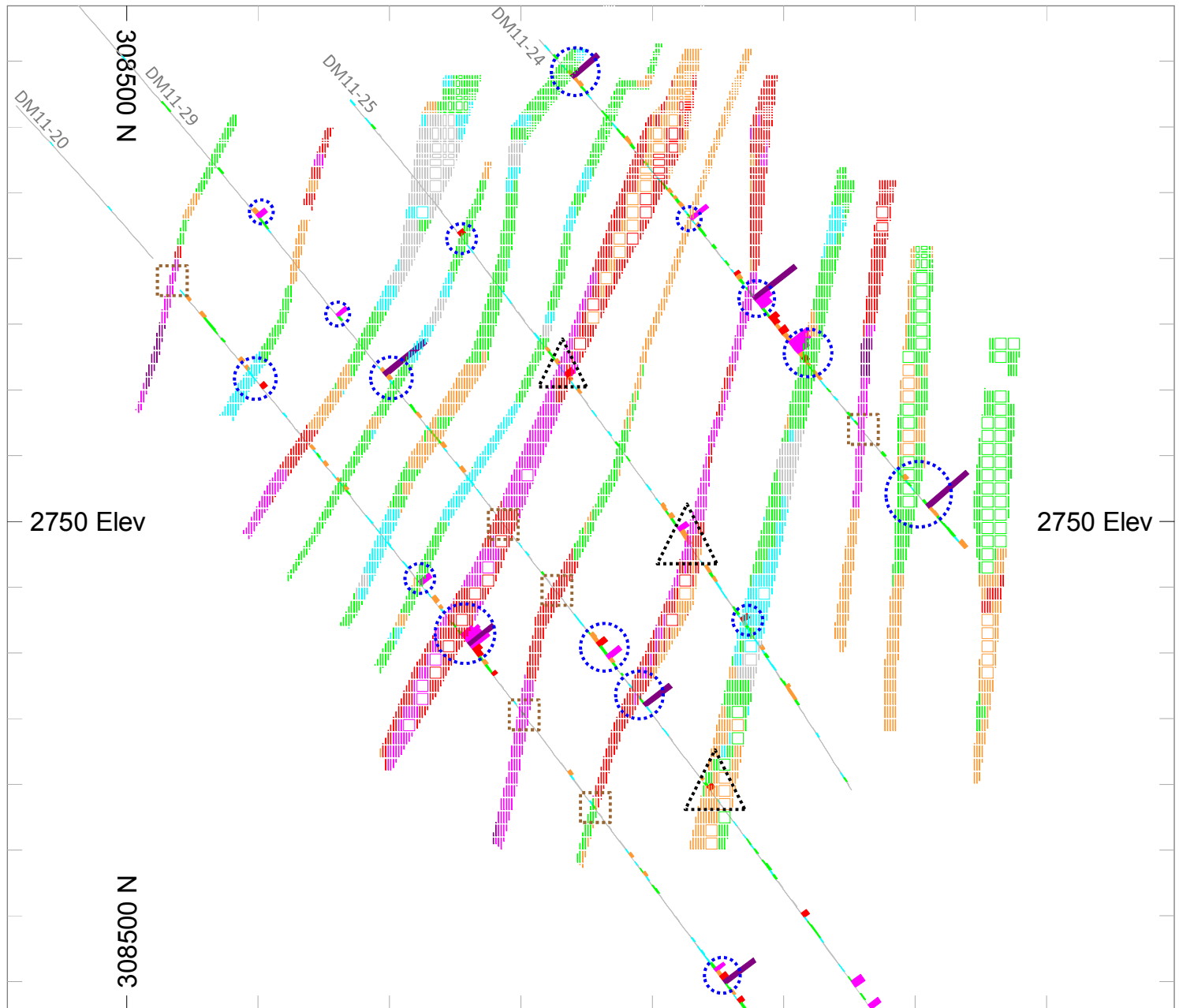


IMPACT OF THE INFILL DRILLING PROGRAM OVER THE PREVIOUS MINERAL RESOURCE BLOCK MODEL



Section 130500.00 E

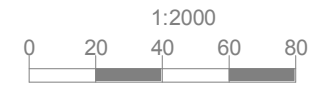
Au (g/t)

Grey	[0,0.3]
Cyan	[0.3,0.5]
Green	[0.5,1]
Orange	[1,2]
Red	[2,4]
Magenta	[4,10]
Purple	[>10]

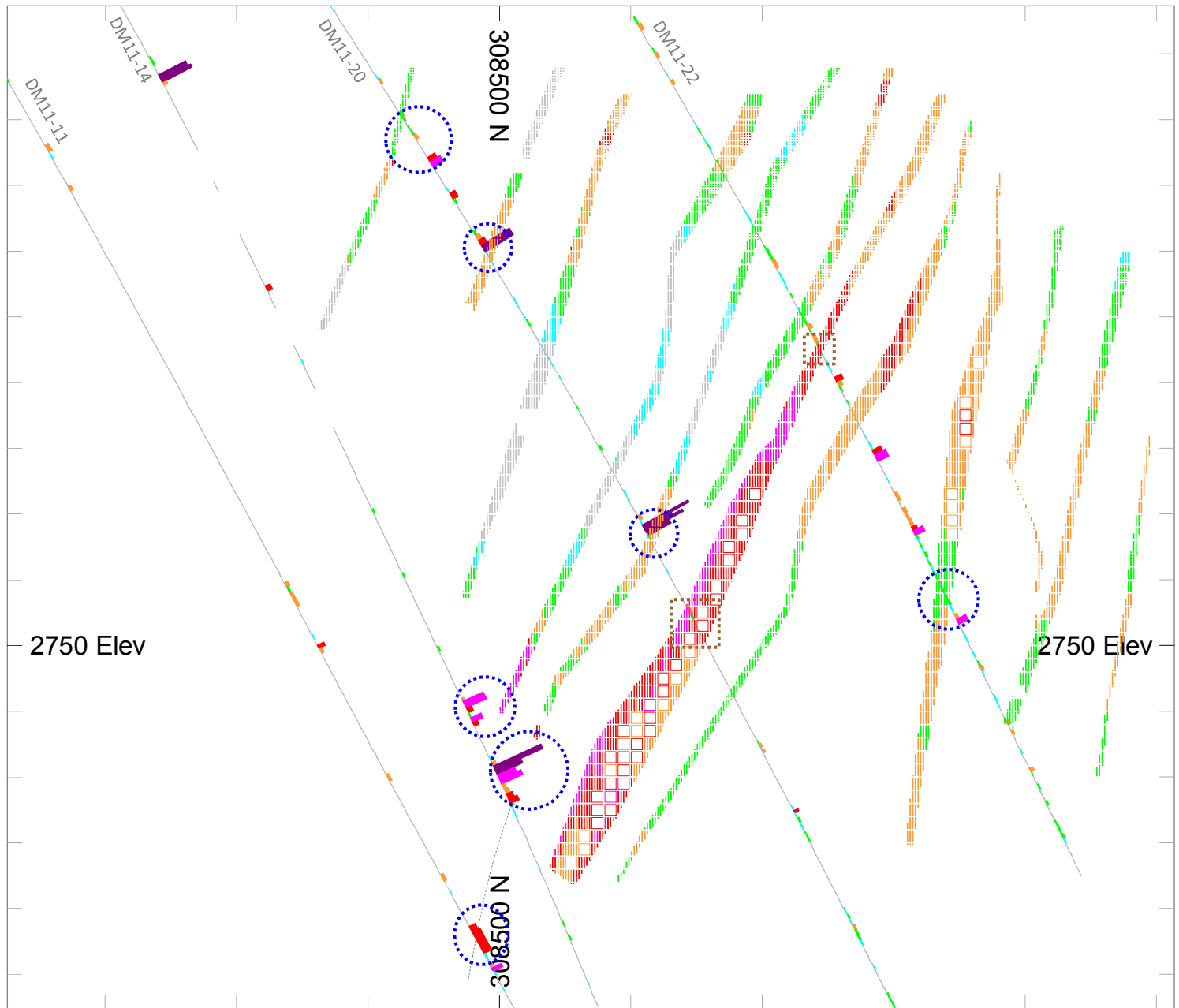
IMPACT*

Blue dashed circle	Positive
Brown dashed square	Negative
Black dashed triangle	Confirm

* Impact was analyzed for Au values greater or equal to 2.5 g/t



IMPACT OF THE INFILL DRILLING PROGRAM OVER THE PREVIOUS MINERAL RESOURCE BLOCK MODEL



Section 130600.00 E

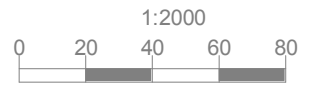
Au (g/t)

- [0,0.3]
- [0.3,0.5]
- [0.5,1]
- [1,2]
- [2,4]
- [4,10]
- [>10]

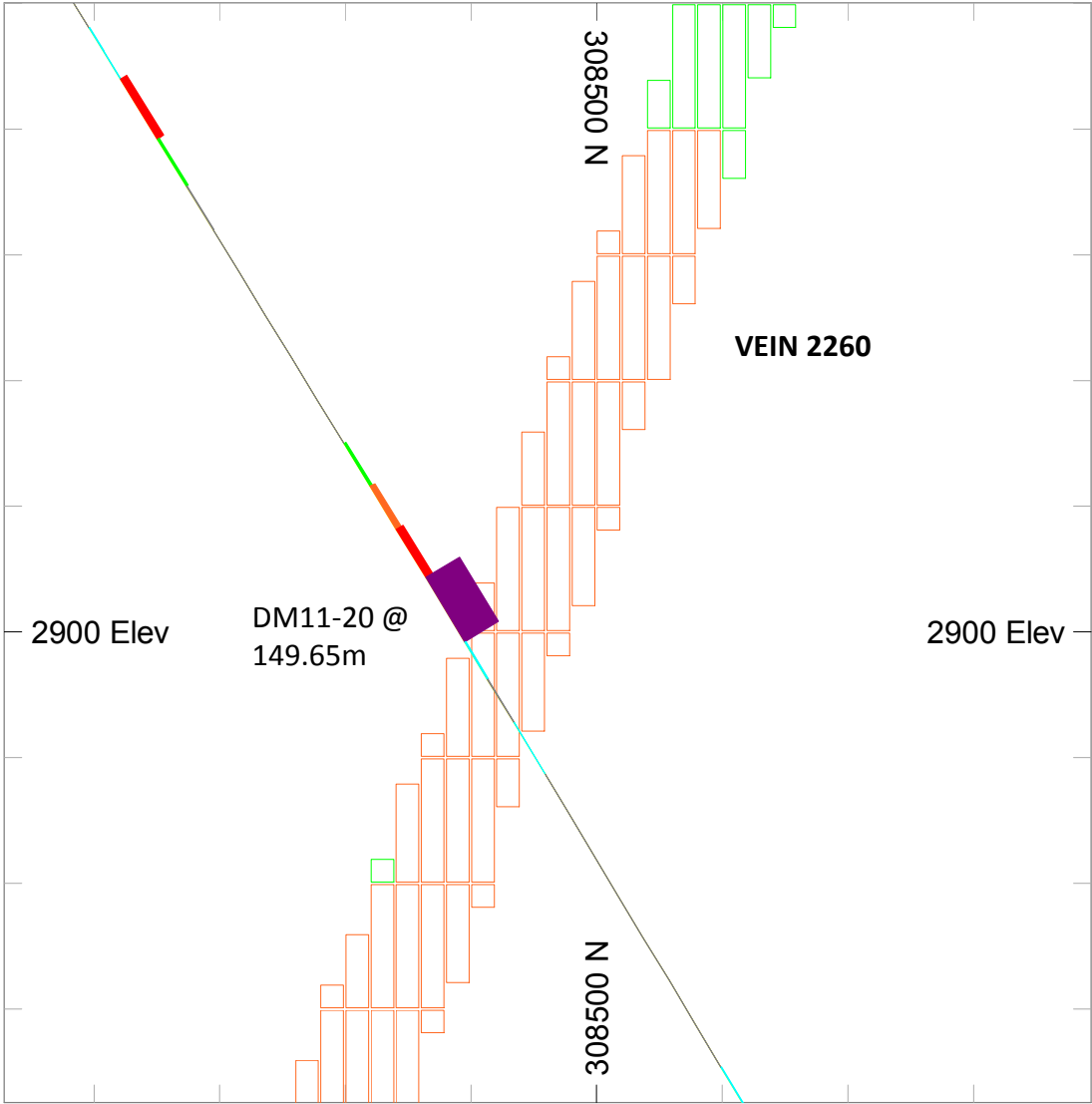
IMPACT*

- Positive
- Negative
- Confirm

* Impact was analyzed for Au values greater or equal to 2.5 g/t

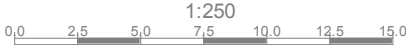
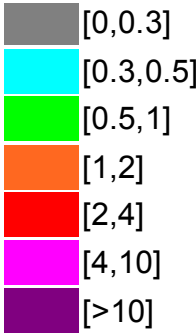


IMPACT OF THE INFILL DRILLING PROGRAM OVER THE PREVIOUS MINERAL RESOURCE BLOCK MODEL

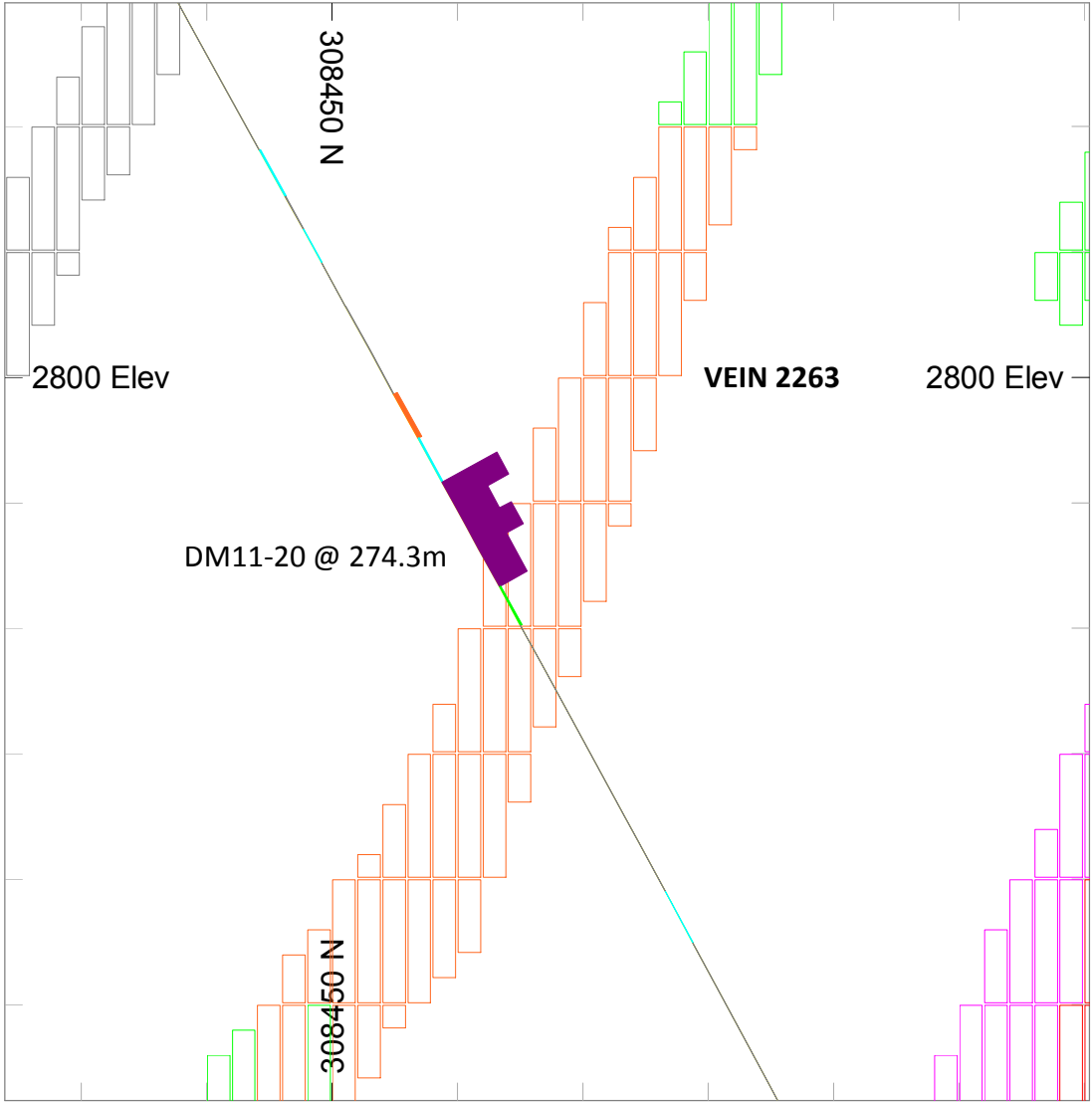


Section 130600.00 E

Au g/t

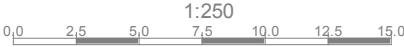
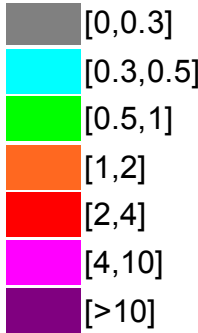


IMPACT OF THE INFILL DRILLING PROGRAM OVER THE PREVIOUS MINERAL RESOURCE BLOCK MODEL

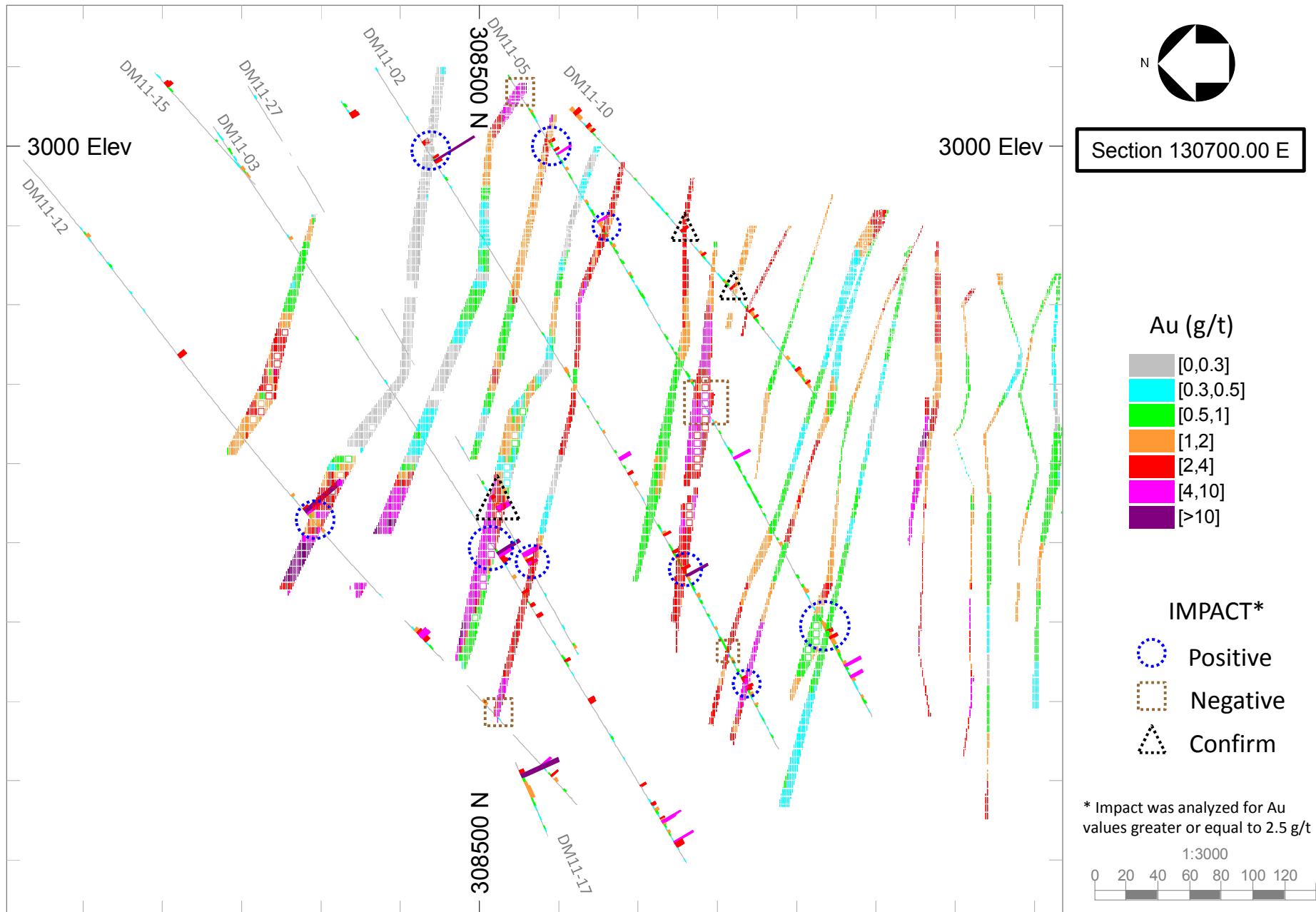


Section 130600.00 E

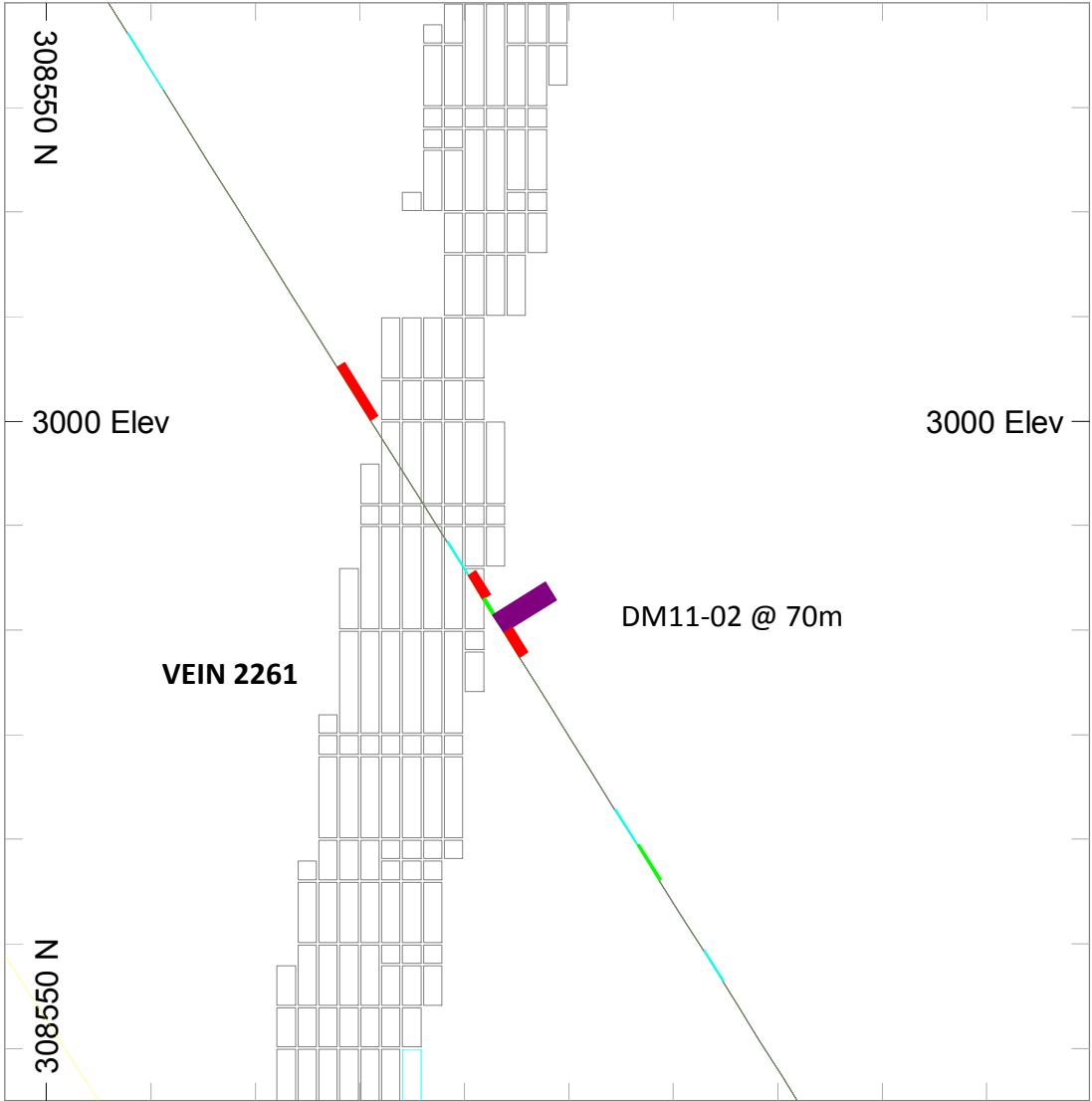
Au g/t



IMPACT OF THE INFILL DRILLING PROGRAM OVER THE PREVIOUS MINERAL RESOURCE BLOCK MODEL

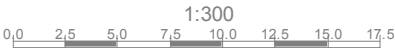


**IMPACT OF THE INFILL DRILLING PROGRAM
OVER THE PREVIOUS MINERAL RESOURCE BLOCK MODEL**

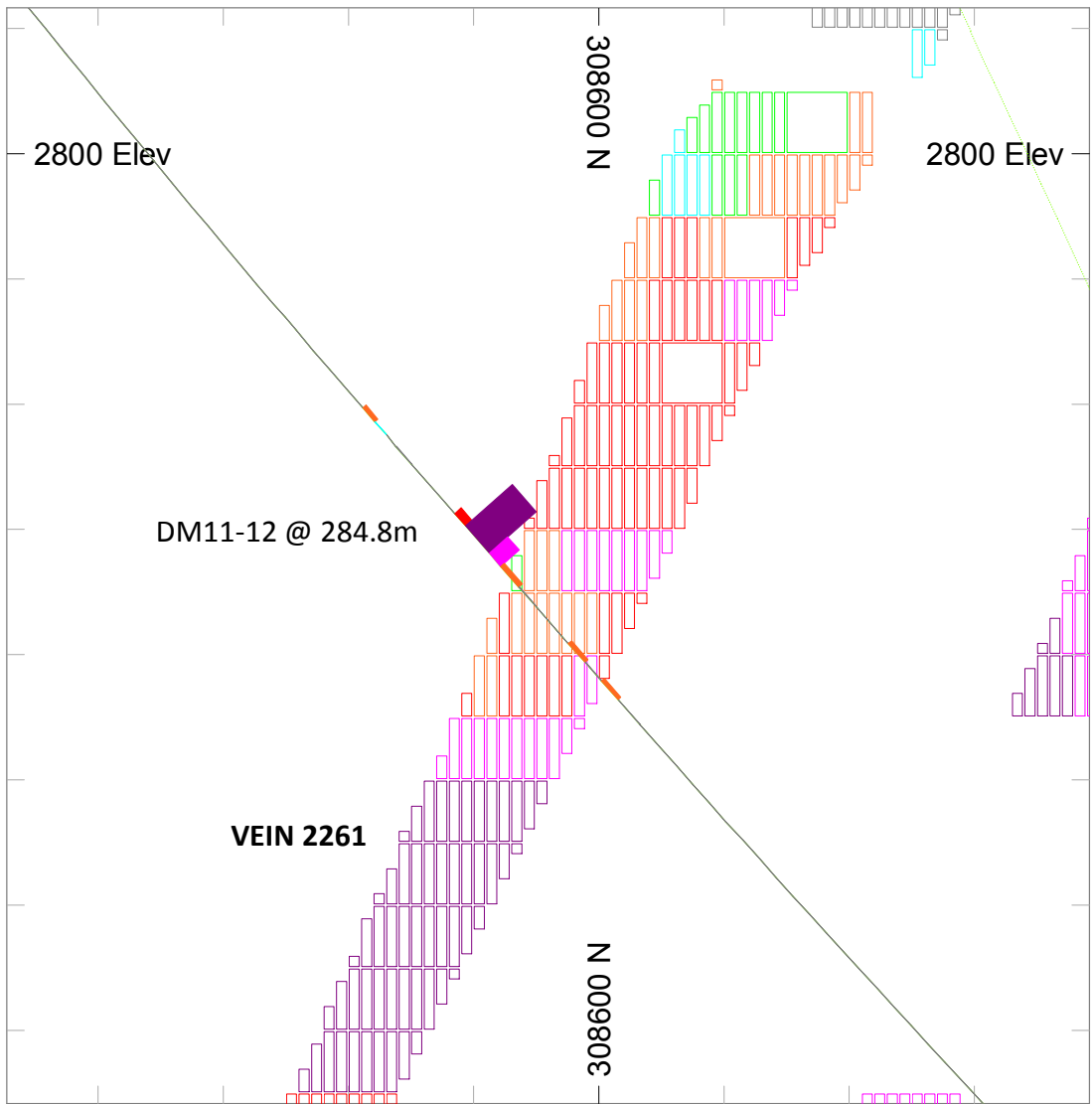


Section 130700.00 E

Au g/t

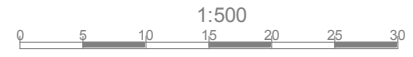
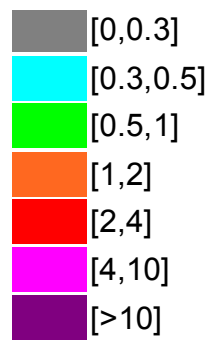


IMPACT OF THE INFILL DRILLING PROGRAM OVER THE PREVIOUS MINERAL RESOURCE BLOCK MODEL

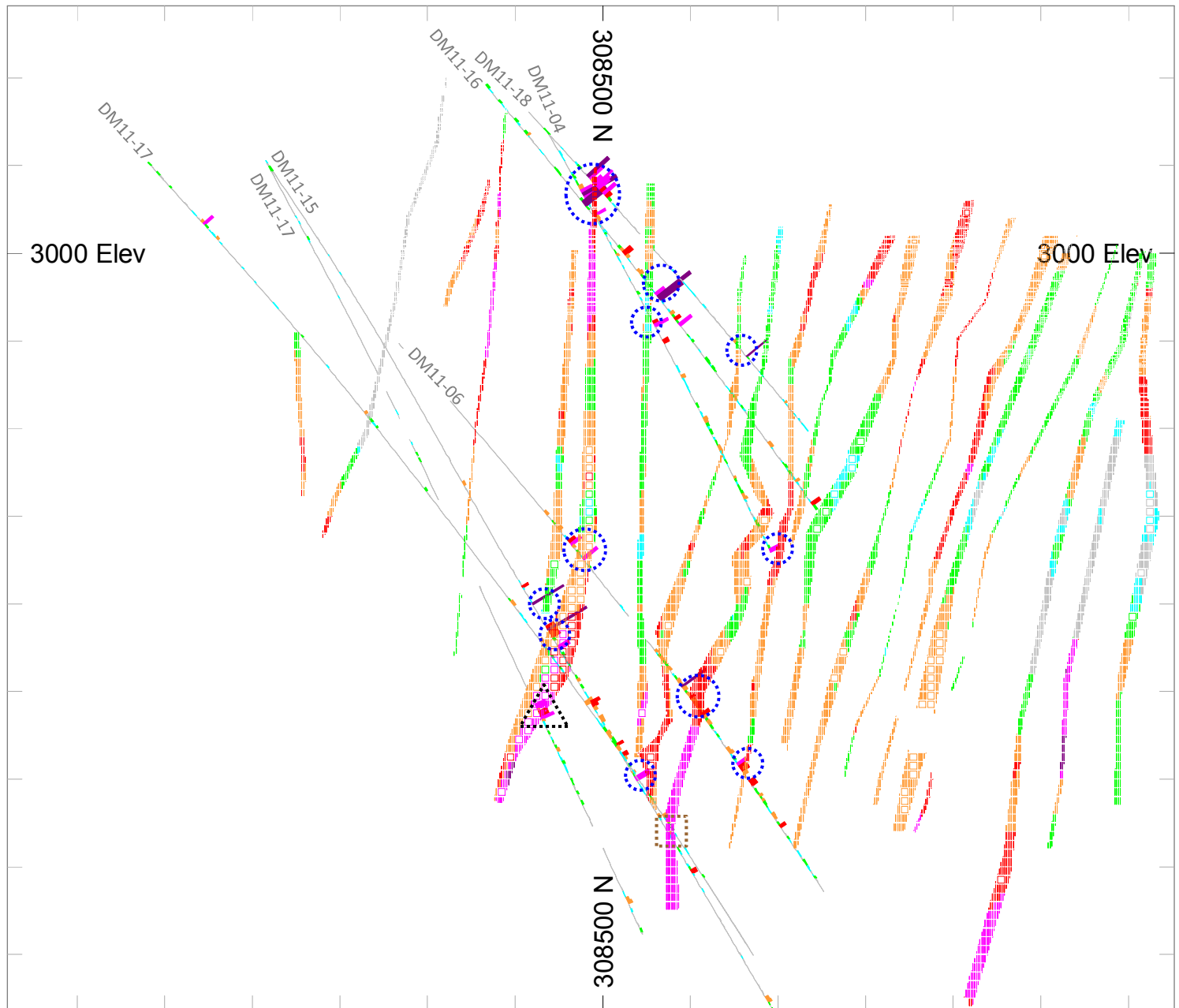


Section 130700.00 E

Au g/t



IMPACT OF THE INFILL DRILLING PROGRAM OVER THE PREVIOUS MINERAL RESOURCE BLOCK MODEL



N

Section 130800.00 E

Au (g/t)

	[0,0.3]
	[0.3,0.5]
	[0.5,1]
	[1,2]
	[2,4]
	[4,10]
	[>10]

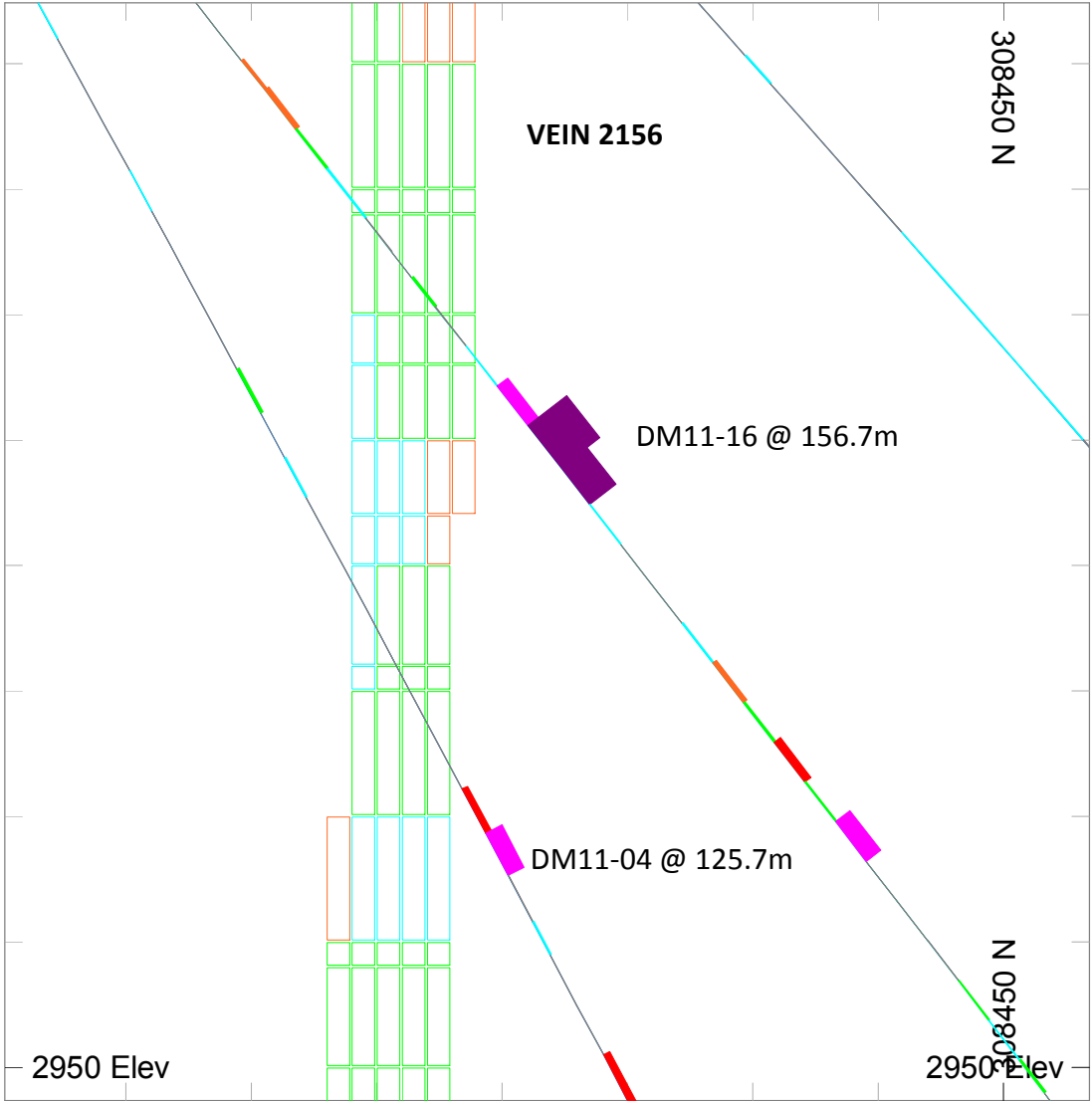
IMPACT*

	Positive
	Negative
	Confirm

* Impact was analyzed for Au values greater or equal to 2.5 g/t

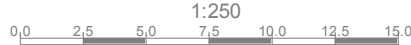
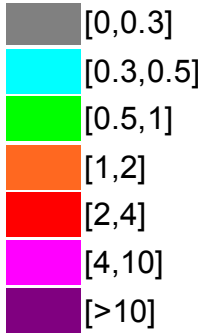
1:3000

**IMPACT OF THE INFILL DRILLING PROGRAM
OVER THE PREVIOUS MINERAL RESOURCE BLOCK MODEL**

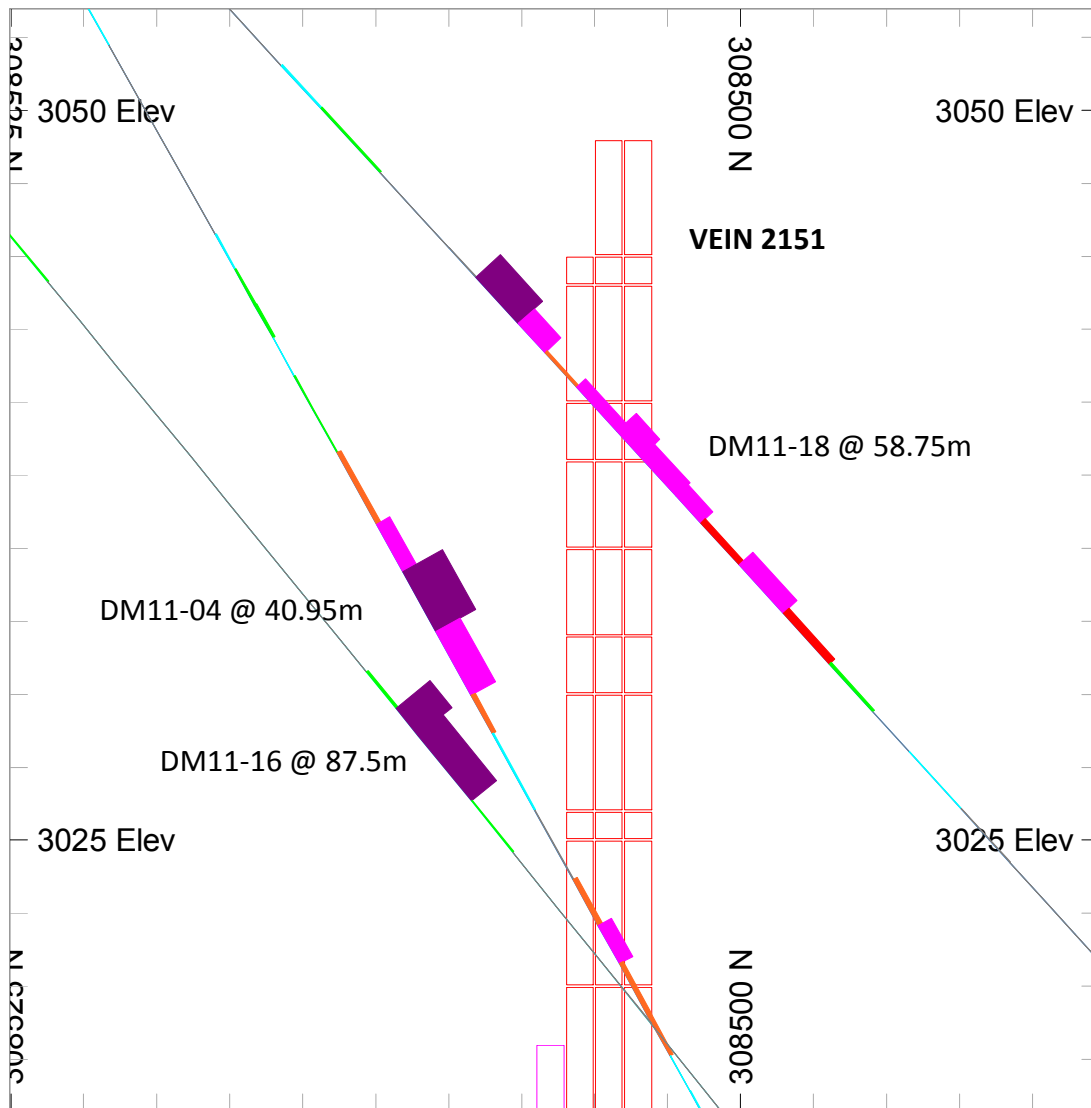


Section 130800.00 E

Au g/t

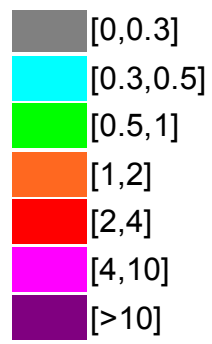


IMPACT OF THE INFILL DRILLING PROGRAM OVER THE PREVIOUS MINERAL RESOURCE BLOCK MODEL

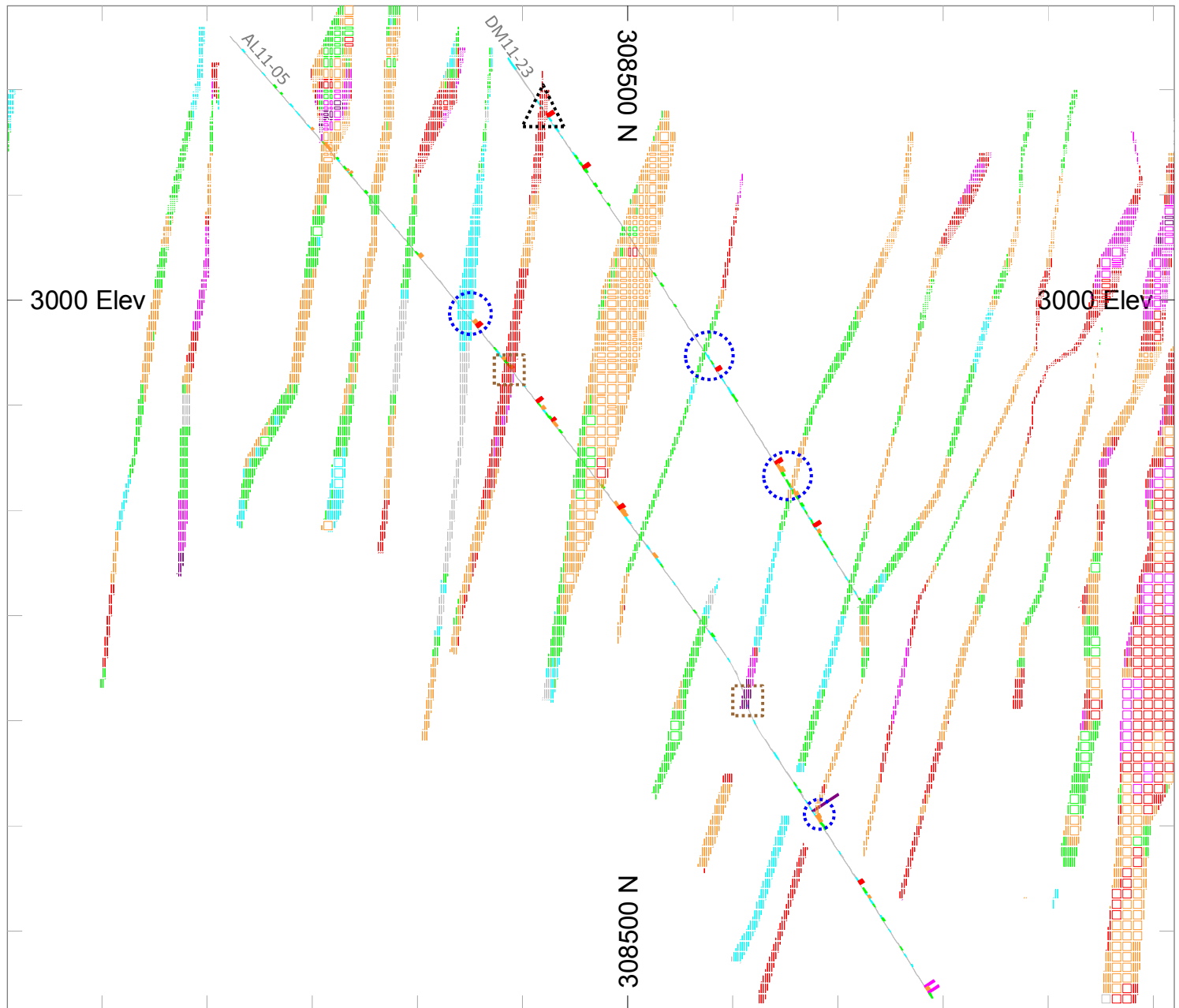


Section 130800.00 E

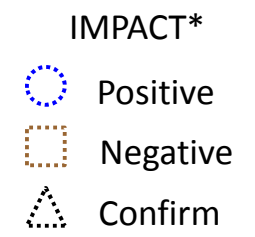
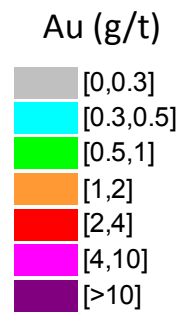
Au g/t



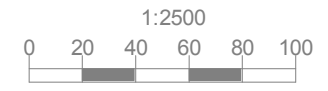
IMPACT OF THE INFILL DRILLING PROGRAM OVER THE PREVIOUS MINERAL RESOURCE BLOCK MODEL



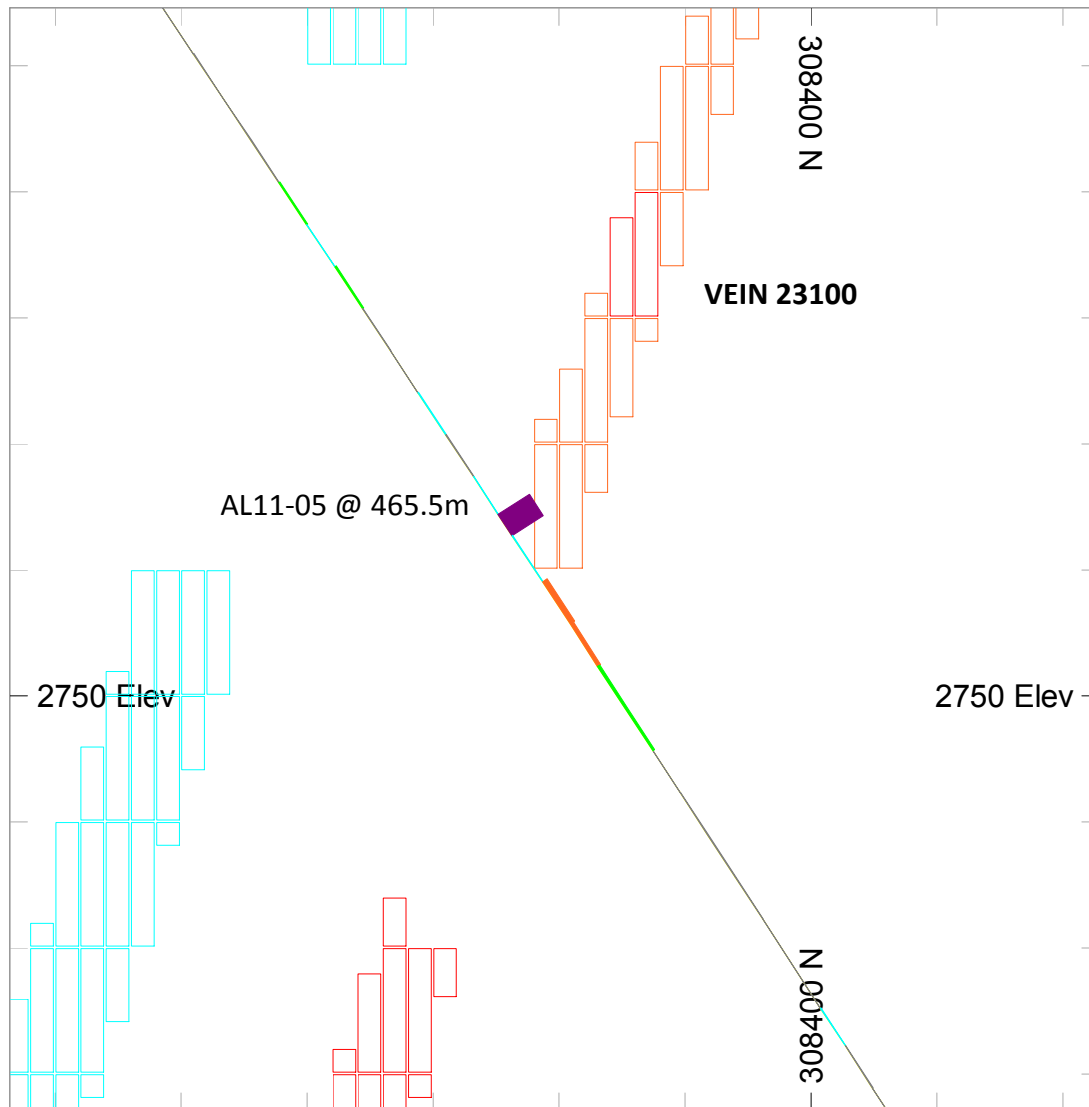
Section 130900.00 E



* Impact was analyzed for Au values greater or equal to 2.5 g/t

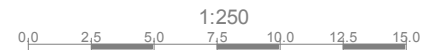
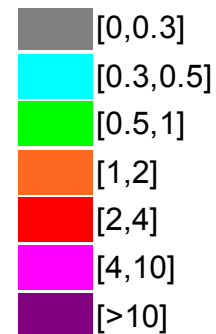


IMPACT OF THE INFILL DRILLING PROGRAM OVER THE PREVIOUS MINERAL RESOURCE BLOCK MODEL

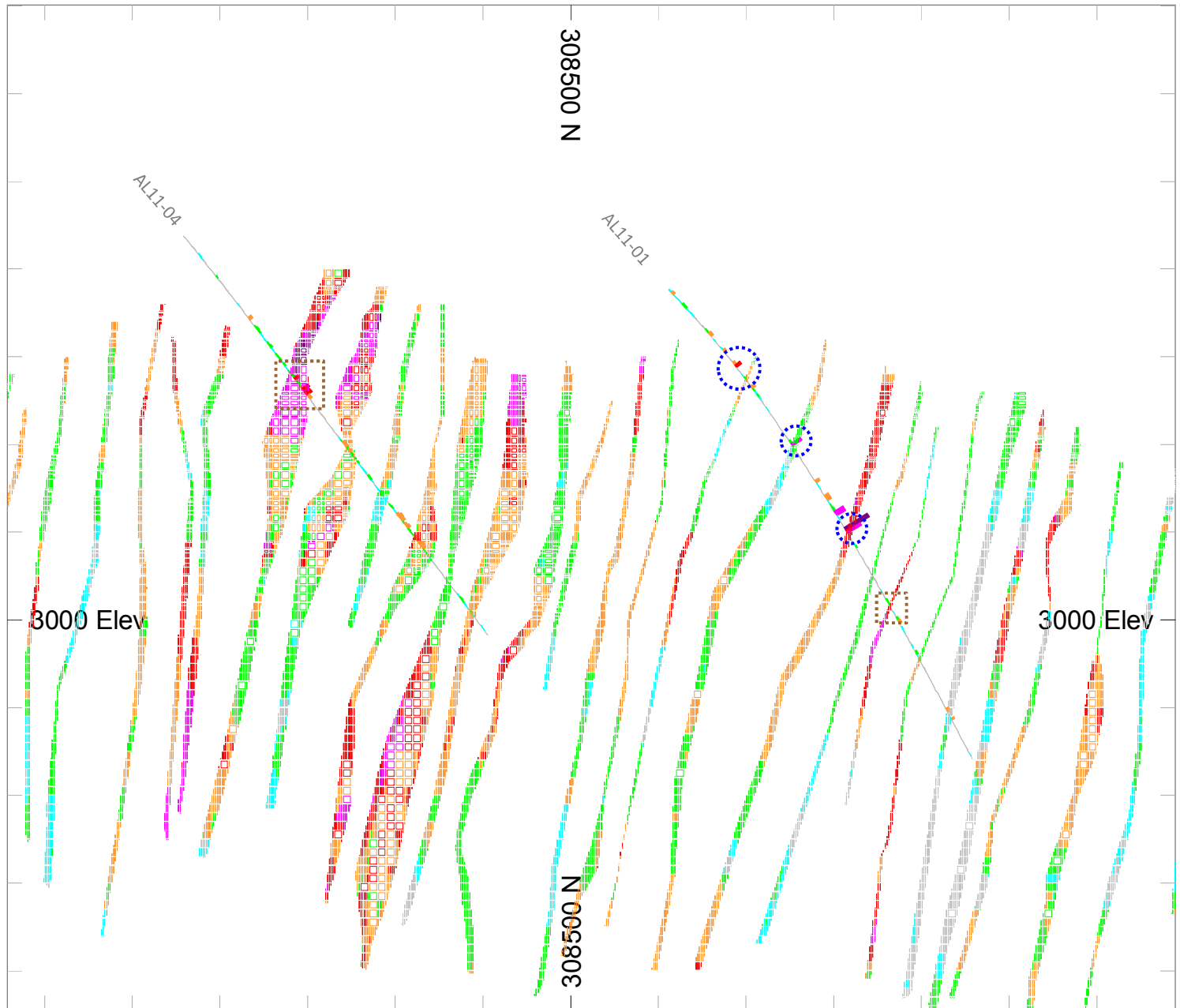


Section 130900.00 E

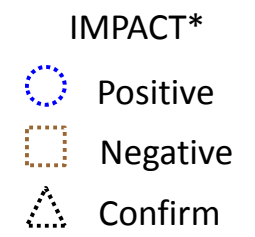
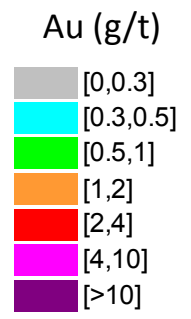
Au g/t



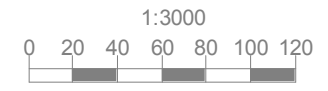
IMPACT OF THE INFILL DRILLING PROGRAM OVER THE PREVIOUS MINERAL RESOURCE BLOCK MODEL



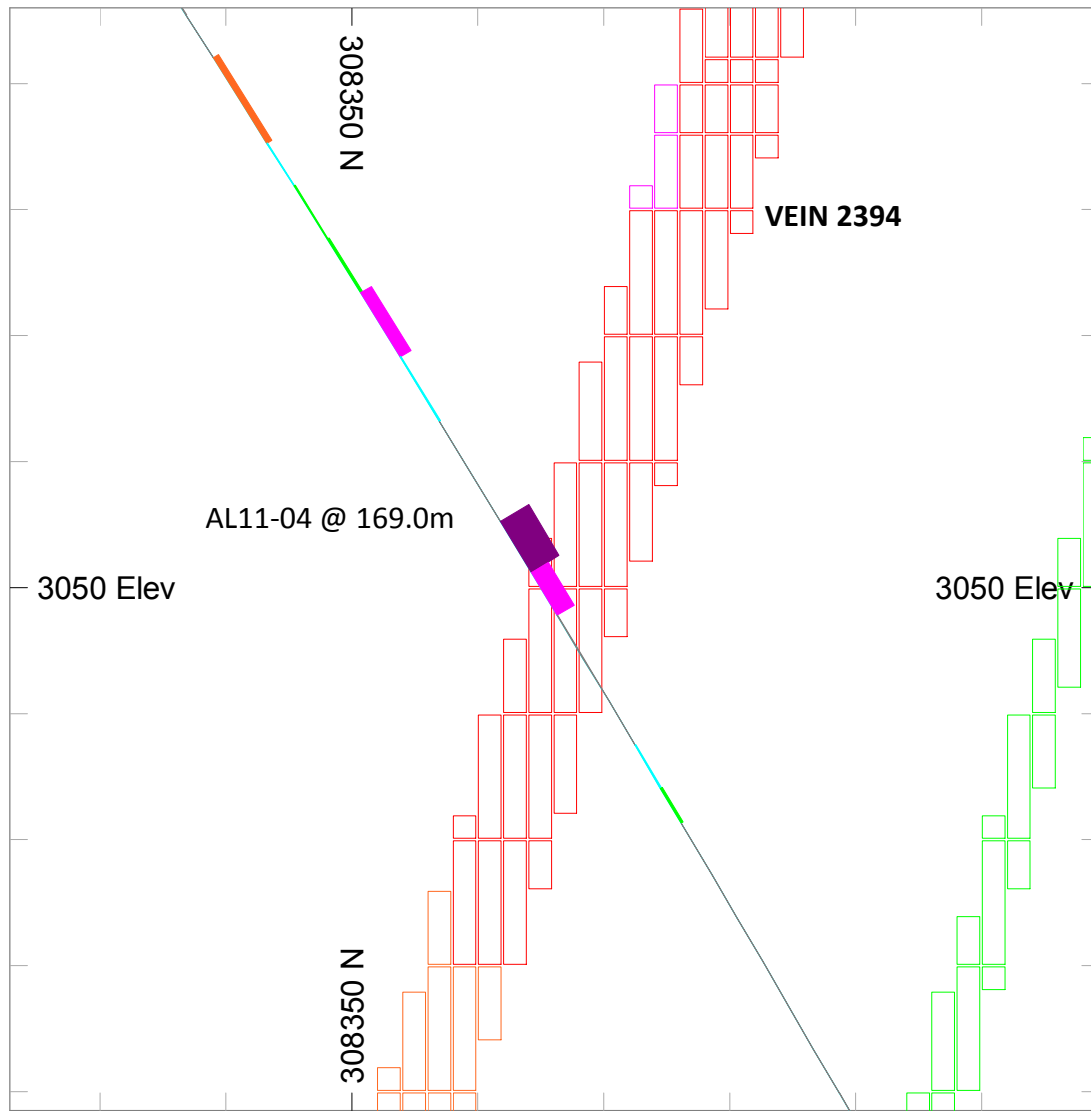
Section 131000.00 E



* Impact was analyzed for Au values greater or equal to 2.5 g/t

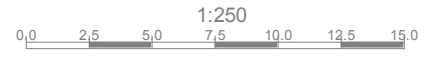
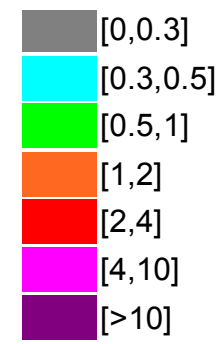


IMPACT OF THE INFILL DRILLING PROGRAM OVER THE PREVIOUS MINERAL RESOURCE BLOCK MODEL

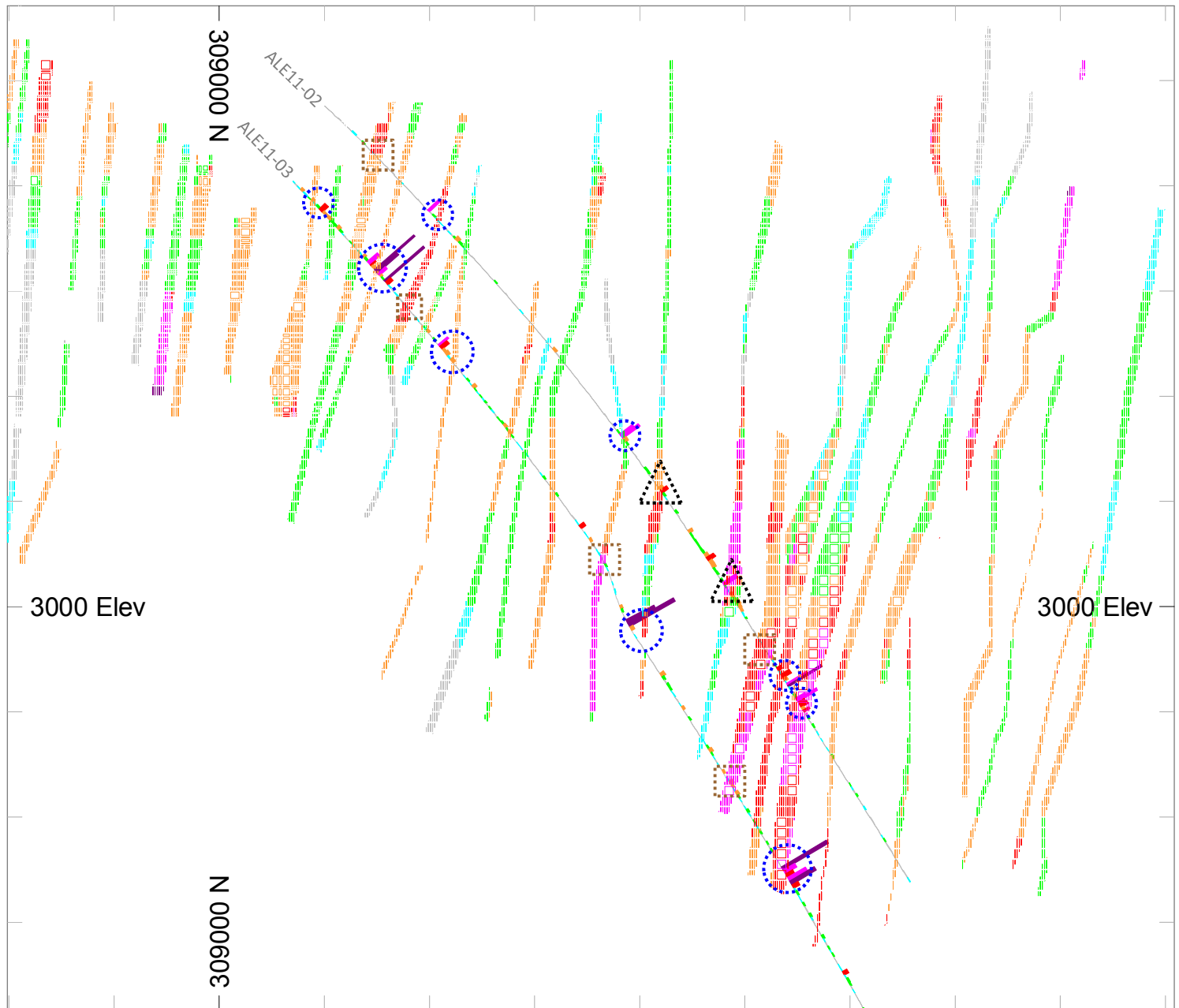


Section 131000.00 E

Au g/t



IMPACT OF THE INFILL DRILLING PROGRAM OVER THE PREVIOUS MINERAL RESOURCE BLOCK MODEL



Section 131300.00 E

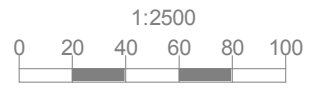
Au (g/t)

- [0,0.3]
- [0.3,0.5]
- [0.5,1]
- [1,2]
- [2,4]
- [4,10]
- [>10]

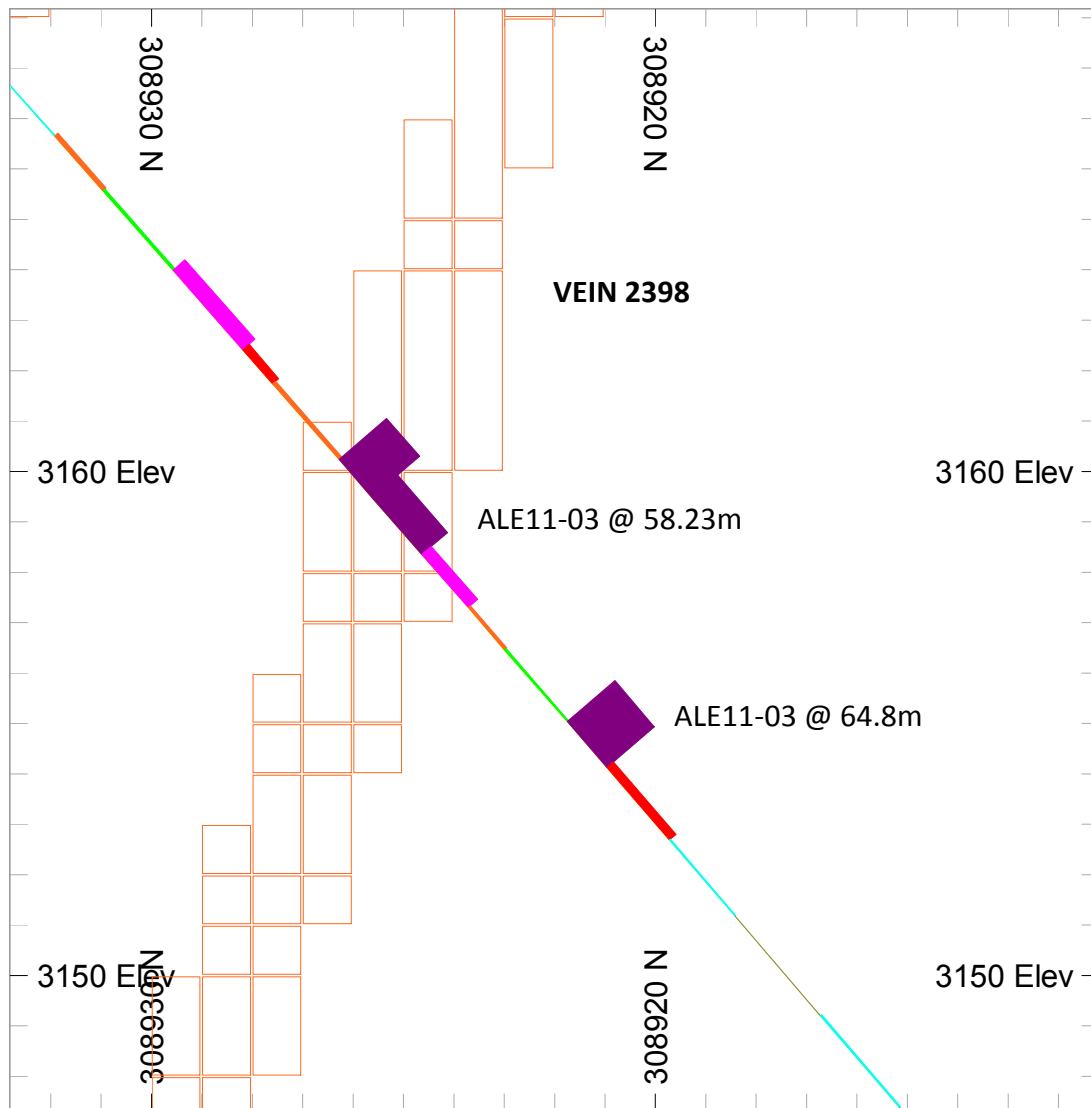
IMPACT*

- Positive
- Negative
- Confirm

* Impact was analyzed for Au values greater or equal to 2.5 g/t



IMPACT OF THE INFILL DRILLING PROGRAM OVER THE PREVIOUS MINERAL RESOURCE BLOCK MODEL

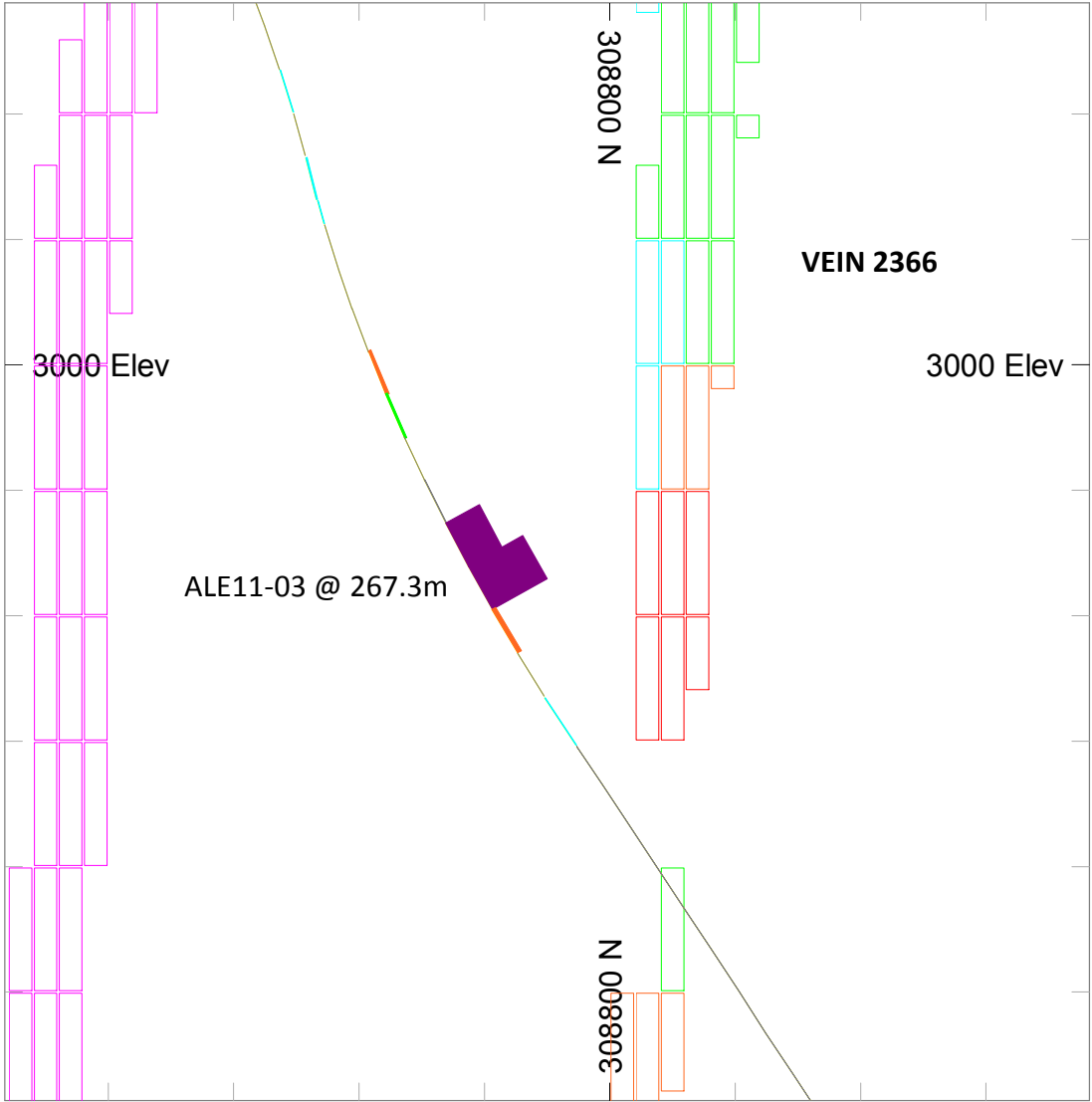


Section 131300.00 E

Au g/t



**IMPACT OF THE INFILL DRILLING PROGRAM
OVER THE PREVIOUS MINERAL RESOURCE BLOCK MODEL**

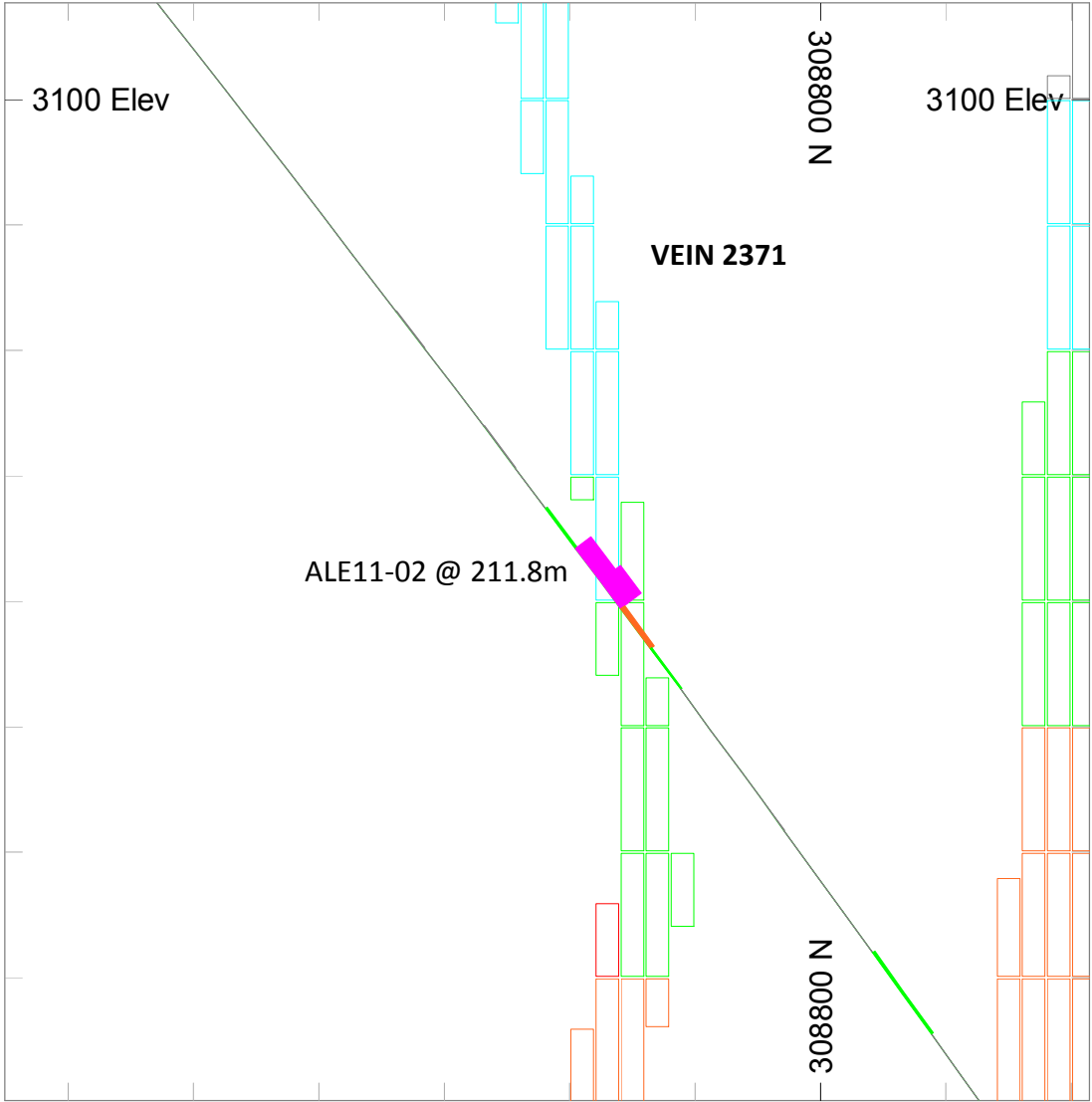


Section 131300.00 E

Au g/t

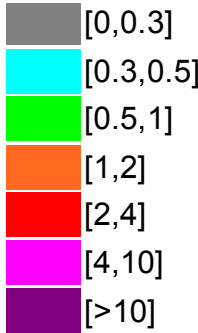


**IMPACT OF THE INFILL DRILLING PROGRAM
OVER THE PREVIOUS MINERAL RESOURCE BLOCK MODEL**

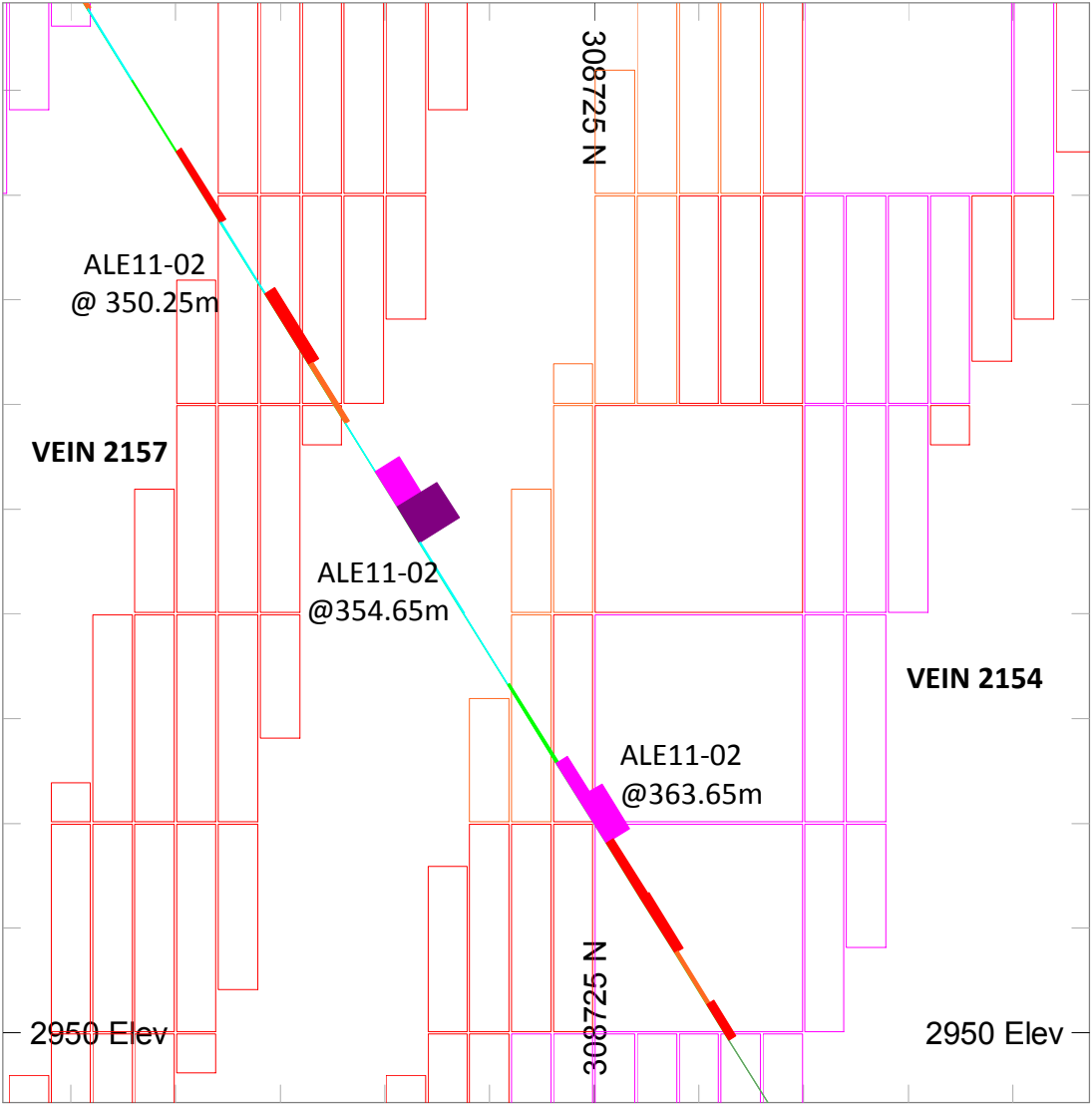


Section 131300.00 E

Au g/t

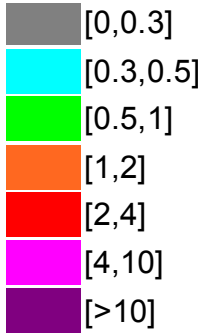


**IMPACT OF THE INFILL DRILLING PROGRAM
OVER THE PREVIOUS MINERAL RESOURCE BLOCK MODEL**

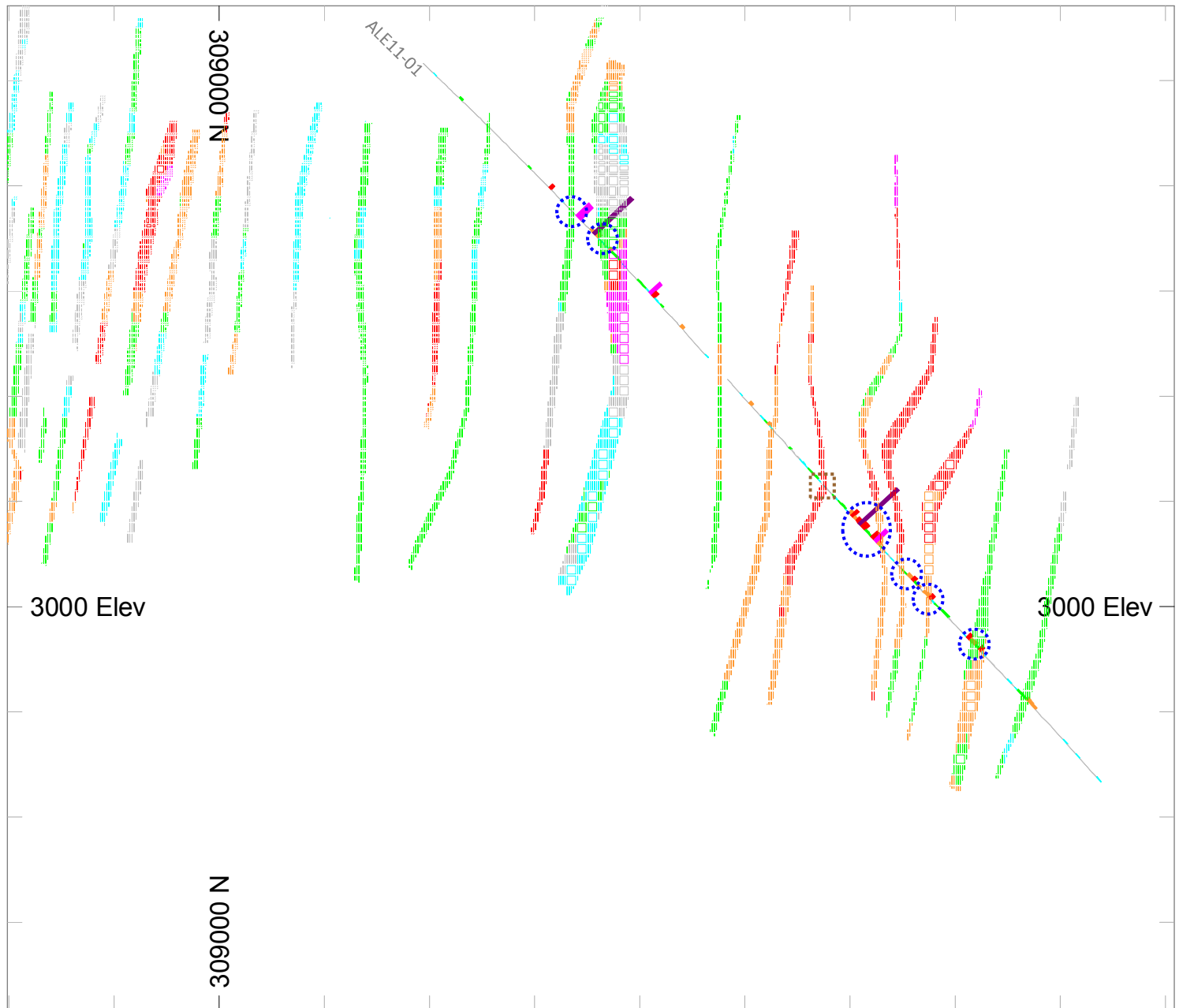


Section 131300.00 E

Au g/t



IMPACT OF THE INFILL DRILLING PROGRAM OVER THE PREVIOUS MINERAL RESOURCE BLOCK MODEL



Section 131400.00 E

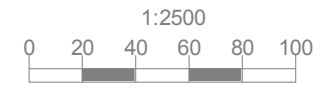
Au (g/t)

	[0,0.3]
	[0.3,0.5]
	[0.5,1]
	[1,2]
	[2,4]
	[4,10]
	[>10]

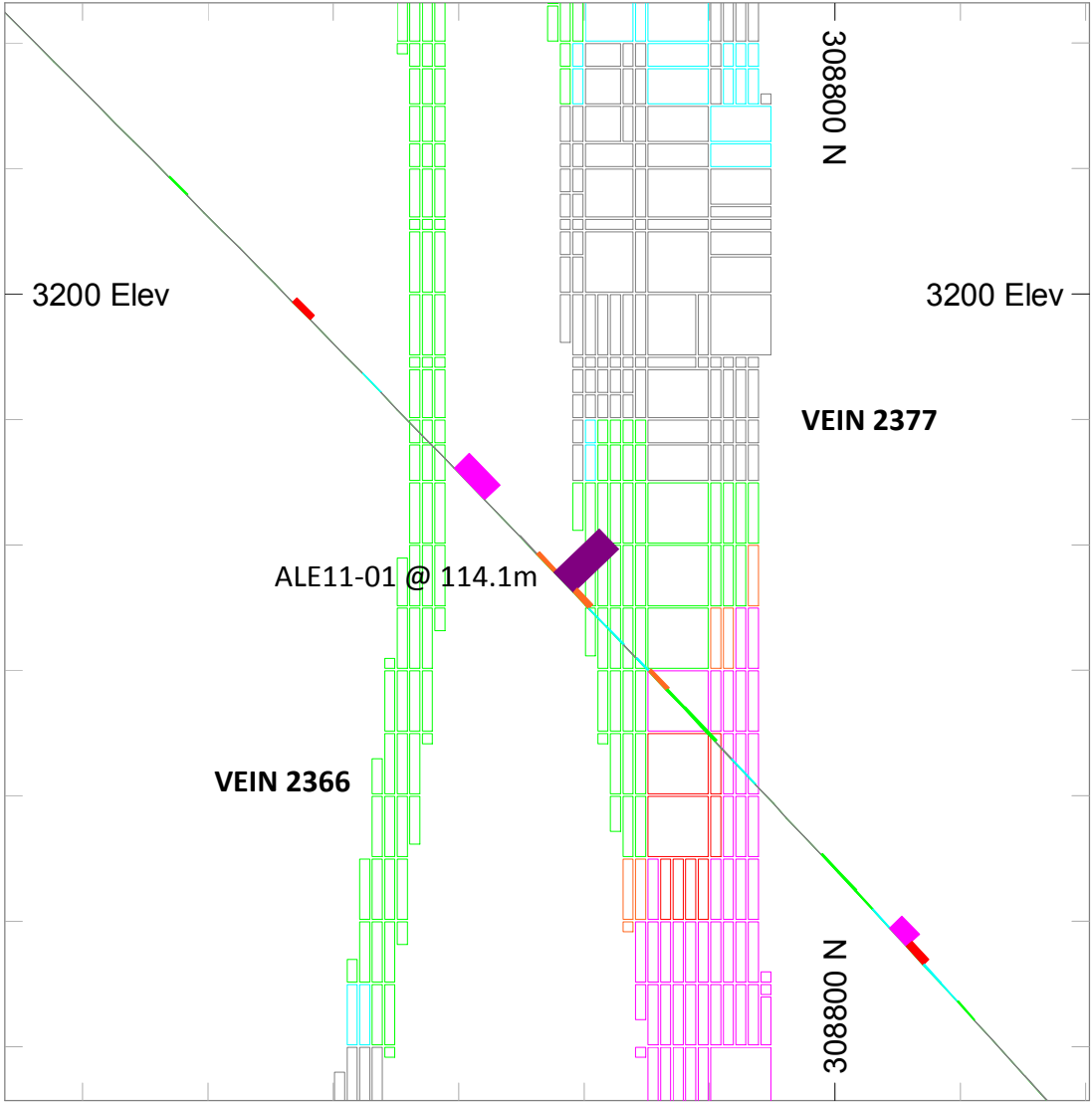
IMPACT*

	Positive
	Negative
	Confirm

* Impact was analyzed for Au values greater or equal to 2.5 g/t

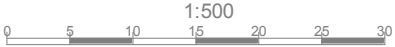
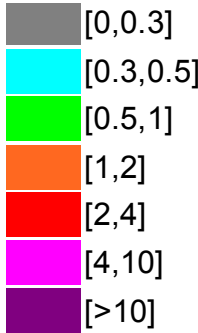


**IMPACT OF THE INFILL DRILLING PROGRAM
OVER THE PREVIOUS MINERAL RESOURCE BLOCK MODEL**



Section 131400.00 E

Au g/t



**IMPACT OF THE INFILL DRILLING PROGRAM
OVER THE PREVIOUS MINERAL RESOURCE BLOCK MODEL**

SECTION	POSITIVE	NEGATIVE	CONFIRM	TOTAL
130500 E	15 65%	6 26%	2 9%	23
130600 E	7 78%	2 22%	0 0%	9
130700 E	9 56%	4 25%	3 19%	16
130800 E	11 85%	1 8%	1 8%	13
131000 E	3 60%	2 40%	0 0%	5
131300 E	9 60%	4 27%	2 13%	15
131400 E	6 86%	1 14%	0 0%	7
TOTAL	60 68%	20 23%	8 9%	88